

CROMMELINS™ COMPACTORS

OPERATION & INSTRUCTION MANUAL

Thank you for your selection of a CROMMELINS™ Compactor.
This Operation Manual explains its use, installation, checking and maintenance.
We highly recommend that you retain this manual for ready reference.



Spare Parts & Service

Phone: 1300 554 524

Freecall Fax: 1800 636 281

spareparts@crommelins.com.au

www.crommelins.com.au

Thank you very much for purchasing a CROMMELINS™ COMPACTOR.

This manual covers the operation and maintenance of the your compactor. These models are built to industry best standards, for use in mining, construction, hire industries and general use.

Please take a moment to familiarise yourself with the proper operation and maintenance procedures in order to maximise the safe and efficient use of this product.

Keep this owner’s manual at hand, so that you can refer to it at any time.

Due to constant efforts to improve our products, certain procedures and specifications are subject to change without notice.

When ordering spare parts please have handy your products model number and serial number. Record these numbers in the boxes below for future reference.

Please fill in the following blanks after checking the production number and serial number on your product. (The location of these numbers may vary).

MODEL NO.

--	--	--	--	--	--	--	--	--	--	--	--	--	--	--

SERIAL NO.

--	--	--	--	--	--	--	--	--	--	--	--	--	--	--

CONTENTS

Introduction & contents 2
Warranty 3
Safety 4
Pre-operation checkup 5
Starting your compactor 5
Hints of operation 6
Stopping your compactor 6
Maintenance, belt setting & storage 7
Specifications charts 8
Trouble shooting 9
CC40HP Exploded drawing & parts list 10
CC60 Exploded drawing & parts list 11
CC70 Exploded drawing & parts list 12
CC70 Folding handle exploded drawing & parts list 13
CC90 Exploded drawing & parts list 14

WARRANTY

CROMMELINS™ and CROMTECH™ are a registered trademark of Crommelins Machinery. Crommelins warrants their goods against defects in materials and workmanship under normal use and service. Crommelins Machinery warranty does not cover fair wear commensurate with the age of the product, any damage caused by accident, abuse, misuse, neglect or failure to observe proper operating instructions or proper machinery maintenance as described in the instruction manual.

It is the owner's responsibility to regularly maintain a product in accordance with the owner's manual and only use the equipment for its designed purpose.

Our goods come with guarantees that cannot be excluded under the Australian Consumer Law. You are entitled to a replacement or refund for a major failure and for compensation for any other reasonably foreseeable loss or damage. You are also entitled to have goods repaired or replaced if the goods fail to be of acceptable quality and the failure does not amount to a major failure.

CONSUMER ADVICE

Any claim under these warranties must be made in the warranty period from the date of purchase of the product.

To make a claim under the warranty, you must return the product (with proof of purchase) to the closest warranty agent or to the place of purchase.

There are over 185 national authorised service/repair agents available, visit www.crommelins.com.au for their details and locations.

Where a failure does not amount to a major failure, Crommelins Machinery is entitled to choose between providing you with a repair, replacement or refund. To obtain compensation, you would need to provide documentary evidence of the loss or damage suffered, and documentary evidence that such loss or damage was a reasonably foreseeable consequence of a failure by Crommelins Machinery to comply with a consumer guarantee under the Australian Consumer Law.

Crommelins Operations Pty Ltd trading as Crommelins Machinery and Crommelins Australia.

CROMMELINS MACHINERY:

Ph: (08) 9350 5588 Fax: (08) 9451 6381

reception@crommelins.com.au

www.crommelins.com.au

PO Box 352, BENTLEY WA 6982

ABN 11 008 889 656

SAFETY

This manual contains important information on how to use the Crommelins compactor models properly and safely. Please read through this manual before you attempt to operate this product.

Ensure safe operation, this compactor is designed to give safe and dependable service if operated according to the instructions.

- Always make a pre-operation inspection before starting the engine. (For more information read engine operational manual)
- Stay AWAY from base plate during operation.
- Do not place flammable objects near the unit.
- Children and pets must always keep away from the area of operation.
- Never allow anyone to operate the unit without proper instructions.
- Must know how to stop the engine quickly and understand the operation of all controls.
- Be careful with the operating place and ventilation, avoid operating the machine in a closed room, tunnel or other badly ventilated places, as its exhaust fumes contain deadly poisonous carbon monoxide. If the machine is unavoidably operated in such a place, discharge the exhaust fumes outside the room by a suitable means.
- Mufflers and other hot parts are dangerous. Do not touch them with hands or any other body parts.
- Observe the following cautions when transporting. Close fuel tank cap securely and close fuel tap tightly during transportation. Drain petrol or diesel from fuel tank before transporting over a long distance or on rough roads.
- Stop engine without fail before replenishing fuel tank. Never replenish fuel while the engine is running or remains hot otherwise spilled or evaporated fuel is liable to catch fire from the engine spark or muffler heat. Wipe off spilled fuel before starting engine.

To prevent injury, wear the following protective clothing: Gloves, hard hat, work boots, ear plugs, safety goggles and any other protective items required by job conditions.



PRE-OPERATION

- **Consult engine manual for detailed starting information.**
- Check all bolts and screws for tightness. Loose bolts and screws may cause damage to the unit.
- Make sure that all dirt, mud, etc., are thoroughly removed from areas such as cooling air inlet of engine, carburettor, and air cleaner.
- Check V-belt tightness. The normal slack should be approximately 10-15mm (1/2") when the belts are forcibly depressed in the middle position between two pulleys. To set belt tightness; refer to Belt Setting at page 3.
- Check fuel level and refill as required.
- Check engine oil level. If engine oil level is low, refill it with the correct engine oil as stated in the engine manual.

CAUTION! – Make sure nobody is in the vicinity of the compactor when starting the engine; it might move suddenly with force.

STARTING PETROL COMPACTOR

STEP 1 – Turn fuel tap to ON position.

STEP 2 – Set throttle lever to LOW (starting position).

STEP 3 – For cold engine starting, close choke lever.

STEP 4 – Set engine switch to ON.

STEP 5 – Pull recoil start handle to point of resistance, carefully return handle, then pull smoothly and swiftly to START.

DO NOT pull recoil starter rope to the end as it may cause damage. When the rope is pulled out, carefully return the rope slowly. Do not let the rope snap back.

STEP 6 – As the engine warms up return the choke to the open position. The warmup procedure should particularly be followed during cold weather.

STARTING DIESEL COMPACTOR (REFER TO ENGINE MANUAL)

STEP 1 – Turn fuel tap to ON position.

STEP 2 – Set throttle lever to LOW (starting position).

STEP 3 – Engine is fitted with automatic decompression.

STEP 4 – Set engine switch to ON.

STEP 5 - Pull recoil start handle to point of resistance, carefully return handle, then pull smoothly and swiftly to START.

DO NOT pull recoil starter rope to the end as it may cause damage. When the rope is pulled out, carefully return the rope slowly. Do not let the rope snap back.

HINTS OF OPERATION

- During uphill compaction, it may be necessary to swing the handle over and pull the machine slightly.
- When compacting on a sloping terrain, the machine may tend to slide sideways. The operator must steer toward the rise causing the machine to travel at an angle. DO NOT operate on inclines of more than 20 degrees.
- When operating the machine in wet or damp soil, it may occasionally be required to clean the bottom of the base plate. Mud accumulation on the base plate will slow the machine down and prevent efficient soil compaction.
- When operating this compactor on asphalt surface, it is recommended that light oil or kerosene be applied to the bottom of the base plate to prevent asphalt sticking and/or accumulation.
- Operating the machine on a fully compacted, hard, or non-yielding surface will cause it to bounce and damage exciter bearings and will greatly reduce the life of the machine. Reduce engine speed to eliminate bounce.

STOPPING PETROL COMPACTOR

STEP 1 – Set throttle lever to LOW (starting position). Allow engine to run for 2-3 minutes.

STEP 2 – Set engine switch to OFF position. Ensure the engine stops completely.

STEP 3 – Turn fuel tap to OFF position.

STEP 4 – Cover the machine after the muffler has cooled off and keep the compactor in a dry place.

EMERGENCY SHUTDOWN: Move throttle lever to LOW and set engine switch to OFF position.

STOPPING DIESEL COMPACTOR

STEP 1 – Set throttle lever to LOW (starting position). Allow engine to run for 2-3 minutes.

STEP 2 – Set engine switch to OFF position. Ensure the engine stops completely.

STEP 3 – Turn fuel tap to OFF position.

STEP 4 – Cover the machine after the muffler has cooled off and keep the compactor in a dry place.

MAINTENANCE

CAUTION - FLAMMABLE LIQUID. When performing maintenance, stop engine and do not smoke in adjacent area.

CAUTION - HIGH TEMPERATURE. Allow machine and engine to cool down before performing maintenance. Contact with hot components can cause serious injury.

CAUTION - MOVING PARTS. Make sure engine is shut down before maintenance. Contact with moving parts can cause serious injury.

DAILY SERVICE

- Check air cleaner element and clean as necessary.
- Check engine oil levels.
- Check for any loose fasteners.
- Check belt tension.

WEEKLY SERVICE (every 50 hours of operation)

- Refer to engine service manual.
- Check engine mounts and all bolts and screws for tightness. Loose bolts and screws may cause damage to the unit.

BELT SETTING

STEP 1 – Loosen engine base bolt (underneath engine) to allow engine-base movement.

STEP 2 – Insert V-belt into clutch pulley and reducer pulley one at a time.

STEP 3 – Adjust the engine position by moving engine-base to ensure v-belts are tight enough.

IMPORTANT: Normal slack should be approximately 10-15mm (1/2”) when the belts are forcibly depressed in the middle position between rotor pulley and clutch pulley.

Tighten all engine bolts and cover V-belt and pulley with belt cover, tighten cover bolts.

STORAGE

- Ensure fuel tap is turned OFF position.
- Make sure that the engine is completely cool before storage.
- Clean up oil and dust accumulation on rubber parts.
- Clean the base plate and wipe on a light coat of oil to prevent rust formation.
- Cover the machine and store it in a dry place.

LONG TERM STORAGE

Remove fuel from the fuel tank. Also remove fuel remaining in the fuel line and chamber of the carburettor. To drain fuel from the chamber of the carburettor, remove the drain plug provided at the chamber and remove fuel.

PLATE COMPACTOR SPECIFICATION CHART

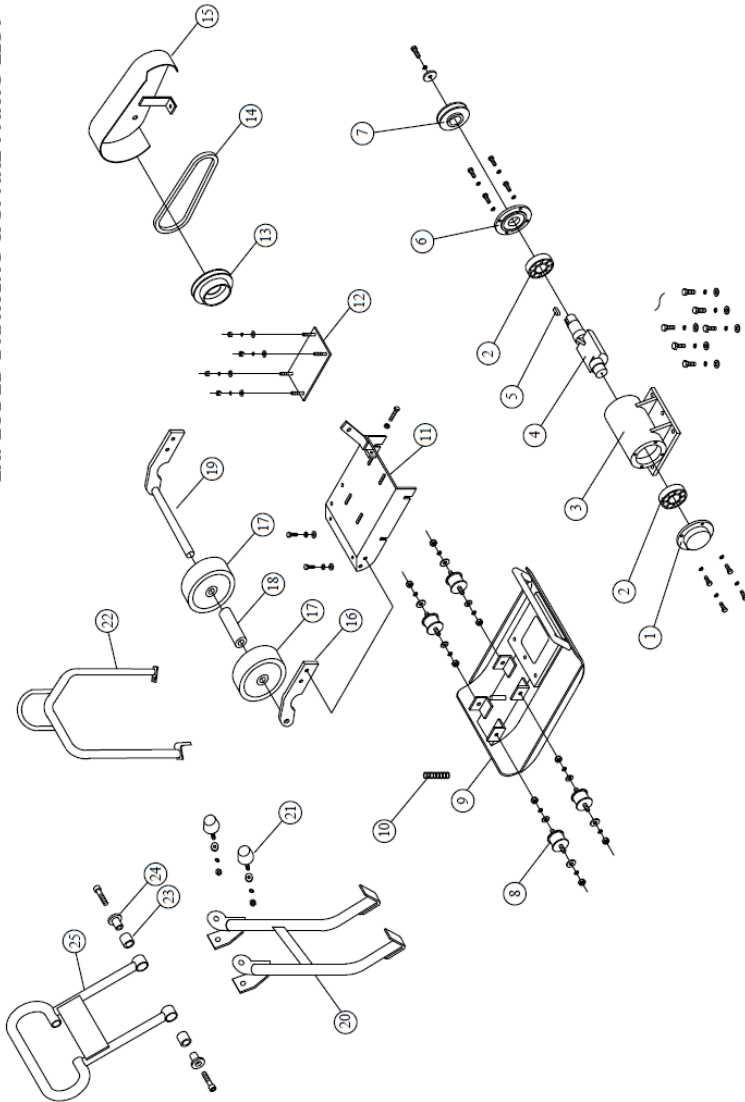
MODEL	CC40HP	CC60RP	CC70RP	CC70RD	CC70YD	CC90RP
Weight (kg)	48kg	68kg	82kg	98kg	95kg	84kg
Frequency(vpm)	5400	5800	6500	6500	6500	6000
Centrifugal Force (kn)	-	12kn	18kn	18kn	18kn	16.5kn
Plate/Shoe Size (LxW mm)	480x280 mm	520x360mm	610x460mm	610 x460mm	610x460mm	540x500mm
Features	Folding handle & wheels	Folding handle & wheels	Central exciter	Diesel	Diesel	Front clamps for isolation mat.
Engine Make	Honda	Robin	Robin	Robin	Yanmar	Robin
Engine	GX100	6.0hp EX17	6.0hp EX17	4.8hp DY23	4.7hp L48N	6.0hp EX17
Engine Features		Side Valve, Recoil Start	OHC			Side Valve, Recoil Start
Fuel Type	Petrol	Petrol	Petrol	Diesel	Diesel	Petrol
Fuel Tank	0.77L	3.6L	3.6L	3.2L	2.4L	3.6L
Noise Level db@7m	-	67db	66db	74db	94db at 1m	69db
Manufacturer's Warranty	2 years	2 years	2 years	2 years	2 years	2 years
Engine Warranty	See manual	3 years	3 years	3 years	See manual	3 years

TROUBLE SHOOTING GUIDE

If the compactor malfunctions immediately shut the machine down. Following are some simple trouble shooting tips:

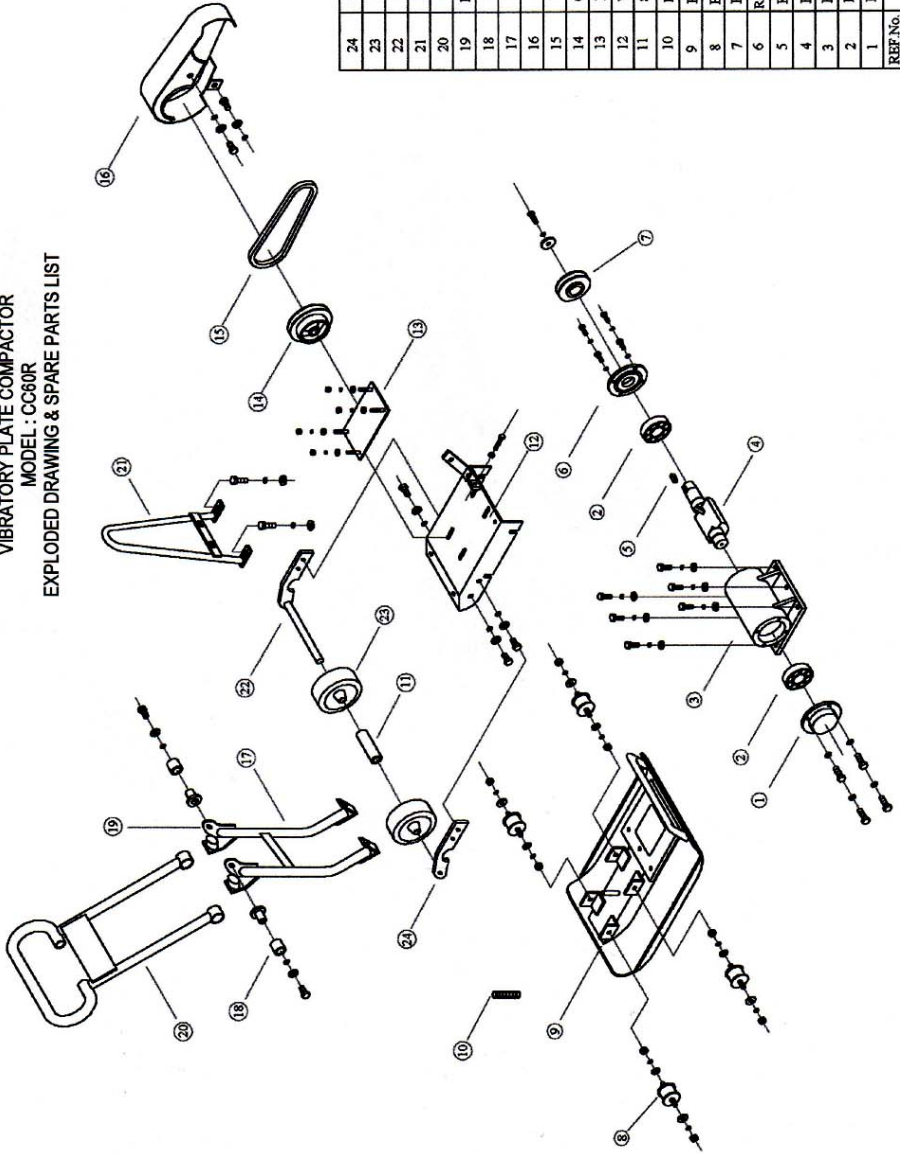
PROBLEM	CAUSE	SOLUTION
Engine won't start, or stops suddenly	<ol style="list-style-type: none"> 1. No fuel in engine 2. Engine switch being set to "OFF" 3. Spark plug carbonised 4. Fuel strainer clogged 5. Carburettor blocked 	<ol style="list-style-type: none"> 1. Refill Fuel 2. Turn the engine switch to "ON" 3. Clean spark plug or replace it with a new one 4. Clean fuel strainer 5. Dismantle and clean carburettor
Engine runs but the machine does not produce any vibration	<ol style="list-style-type: none"> 1. Air cleaner element clogged 2. Lack of engine power 3. Centrifugal clutch is slipping 4. Improper v-belt tension, or excessive wear of v-belt 	<ol style="list-style-type: none"> 1. Dismantle the cleaner element and clean the element with proper solvent (see engine manual) 2. Refer to engine manual 3. Dismantle the clutch assembly and clean the shoe and drum with proper solvent 4. Adjust the tension or replace the belt with new one
Slow or irregular vibration	<ol style="list-style-type: none"> 1. Centrifugal clutch is slipping 2. Improper v-belt tension, or excessive wear of v-belt. 	<ol style="list-style-type: none"> 1. Dismantle the clutch assembly, and clean the shoe and drum with proper solvent 2. Adjust the v-belt tension or replace the belt with a new one.
<p>IF THE FAULT PERSISTS, CONTACT YOUR LOCAL DEALER.</p>		

**VIBRATORY PLATE COMPACTOR
MODEL: CC40HP
EXPLODED DRAWING & SPARE PARTS LIST**



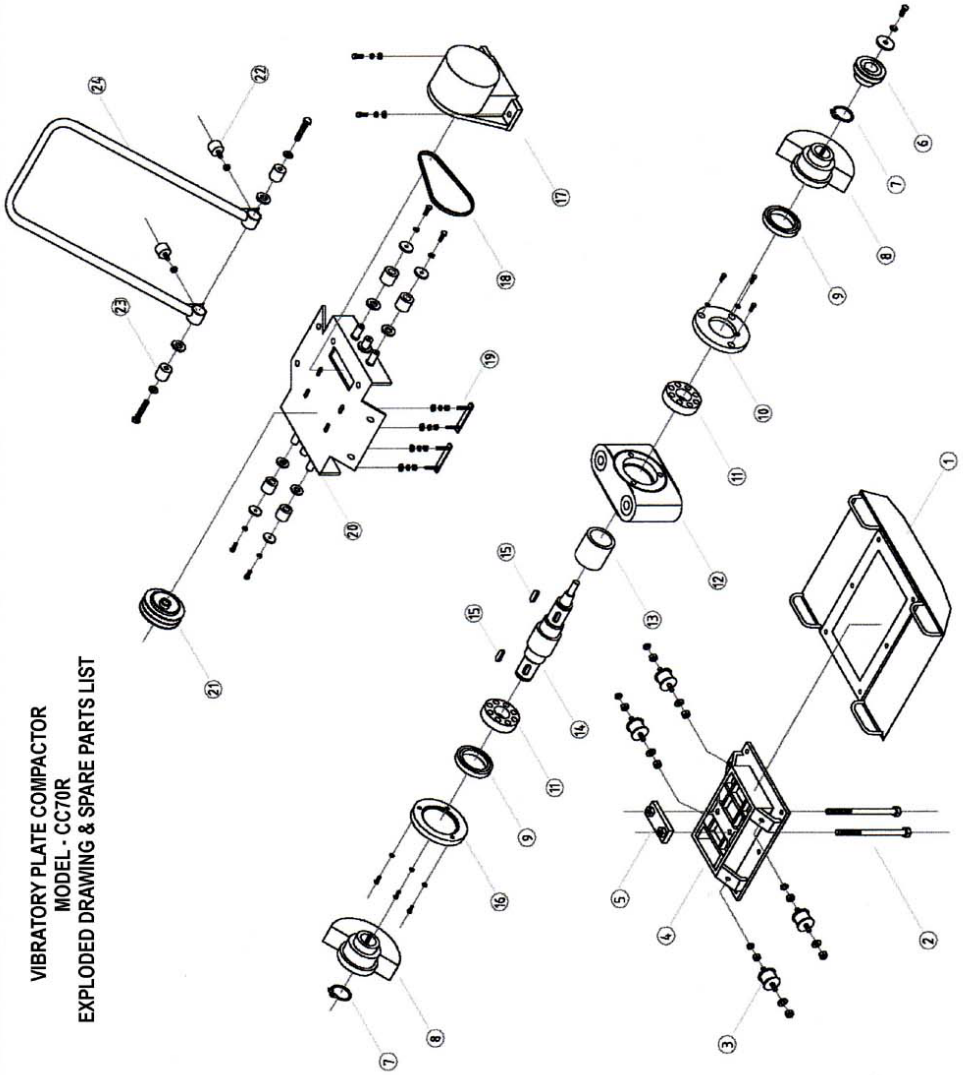
NO	DESCRIPTION
25	HANDLE
24	HANDLE MTG BUSH
23	HANDLE RUBBER BUSH
22	LIFTING HOOK
21	HANDLE STOPPER RUBBER
20	HANDLE SUPPORT
19	WHEEL AXLE
18	SPACER
17	WHEEL
16	WHEEL BRACKET
15	BELT COVER
14	BELT
13	CLUTCH
12	ENG MTG CLAMP
11	ENGINE MOUNTING
10	ELEC. STATIC SPRING
9	BASE PLATE
8	ENG. RUBBER MTG
7	ROTOR PULLEY
6	ROTOR COVER (P)
5	KEY
4	ROTOR SHAFT
3	ROTOR HOUSING
2	BEARING
1	ROTOR COVER

VIBRATORY PLATE COMPACTOR
 MODEL : CC60R
 EXPLODED DRAWING & SPARE PARTS LIST



REF. No.	DESCRIPTION:
24	WHEEL BRACKET
23	WHEEL
22	WHEEL AXLE
21	LIFTING HOOK
20	HANDLE
19	HANDLE BRACKET
18	HANDLE MTG.BUSH
17	HADLE SUPPORT
16	BELT COVER
15	V-BELT (A 29)
14	CLUTCH
13	ENG. MTG.CLAMP
12	WHEEL
11	SPACER
10	ELEC.STATIC.SPRING
9	BASE PLATE
8	ENG.RUBBER.MTG
7	ROTOR PULLEY
6	ROTOR COVER (F)
5	KEY (M10*8*25lg)
4	ROTOR SHAFT
3	ROTOR HOUSING
2	BEARING (6303 ZZ)
1	ROTOR COVER

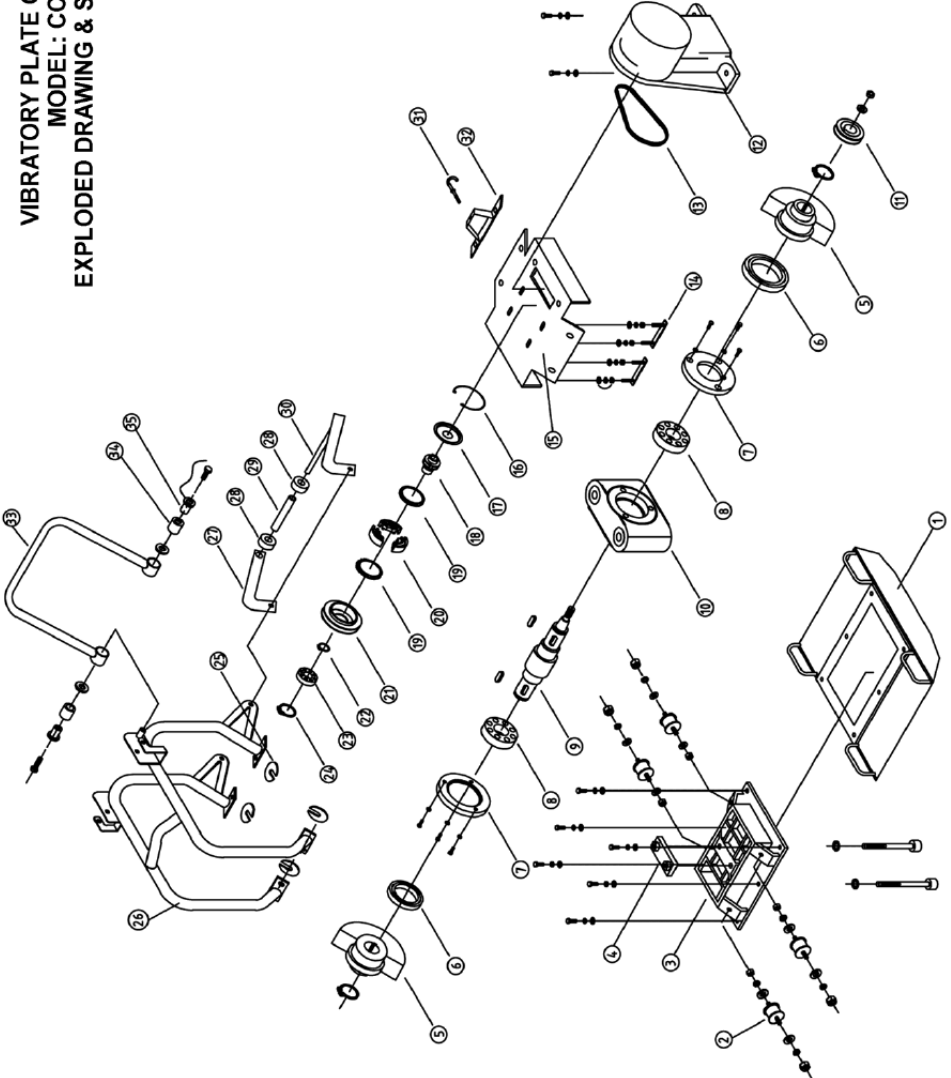
VIBRATORY PLATE COMPACTOR
 MODEL - CC70R
 EXPLODED DRAWING & SPARE PARTS LIST



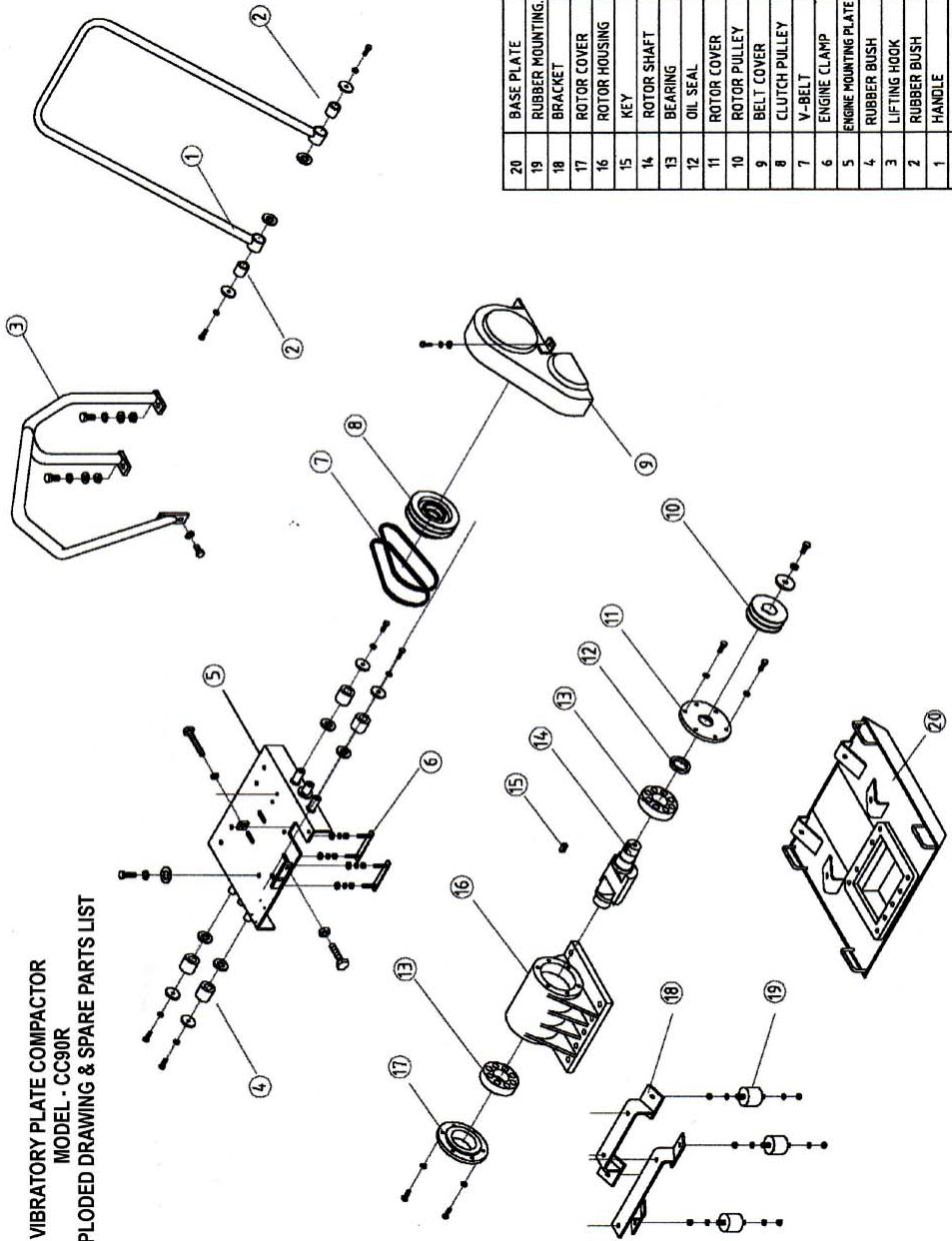
REF.NO	DESCRIPTION
1	BASE
2	EXCITER BOLT
3	RUBBER MOUNTING
4	EXCITER MOUNTING PLATE
5	EXCITER CLAMP
6	EXCITER PULLEY
7	CIRCLIP (A24)
8	UNBALANCE WEIGHT
9	OIL SEAL (035*052*7)
10	ROTOR HOUSING COVER
11	BEARING (NJ 306E C3)
12	ROTOR HOUSING
13	BUSH
14	EXCITER SHAFT
15	KEY
16	ROTOR HOUSING COVER
17	PULLEY COVER
18	V-BELT (A-30)
19	ENGINE CLAMP
20	ENGINE MOUNTING PLATE
21	CLUTCH PULLEY
22	HANDLE STOPPER
23	HANDLE BUSH
24	HANDLE

VIBRATORY PLATE COMPACTOR
 MODEL: CC70N
 EXPLODED DRAWING & SPARE PARTS LIST

Ref. No.	Description
1.	Machine Base
2.	Engine Rubber Mounting
3.	Exciter MTG Base
4.	Exciter Clamp
5.	Exciter
6.	Oil Seal
7.	Rotor Cover
8.	Bearing
9.	Rotor Shaft
10.	Rotor Housing
11.	Exciter Pulley
12.	Belt Cover
13.	Belt
14.	Engine Clamp
15.	Engine MTG
16.	Clutch Cover Clip
17.	Clutch Cover
18.	Clutch Spring
19.	Clutch Shoe Holder
20.	Clutch Shoe
21.	Clutch Pulley
22.	Circclip
23.	Bearing
24.	Circclip
25.	Special Washer (Z)
26.	Lifting Hook
27.	Wheel Bracket 2
28.	Wheel
29.	Spacer
30.	Wheel Bracket 1
31.	Hook
32.	Hook Bracket
33.	Handle
34.	Rubber Bush
35.	Handle MTG Bush



VIBRATORY PLATE COMPACTOR
 MODEL - CC90R
 EXPLODED DRAWING & SPARE PARTS LIST



REF. NO	DESCRIPTION	SIZE
20	BASE PLATE	
19	RUBBER MOUNTING BRACKET	
18	ROTOR COVER	
17	ROTOR HOUSING	
16	KEY	
15	ROTOR SHAFT	
14	BEARING	6309 ZZ C3
13	OIL SEAL	40/55/8
12	ROTOR COVER	
11	ROTOR PULLEY	
10	BELT COVER	
9	CLUTCH PULLEY	
8	V-BELT	A31
7	ENGINE CLAMP	
6	ENGINE MOUNTING PLATE	
5	RUBBER BUSH	
4	LIFTING HOOK	
3	RUBBER BUSH	
2	HANDLE	
1		



Spare Parts & Service

Phone: 1300 554 524

Freecall Fax: 1800 636 281

spareparts@crommelins.com.au

www.crommelins.com.au

